

## SAFETY PATTERN PRESSURE GAUGE ALUMINIUM CASE, MODEL : P339 SERIES

# WISE<sup>®</sup>

### SERVICE INTENDED

The P339 series are widely used in industries such as fossil, nuclear, aerospace and marine. These gauge cases feature an integral wall between the measuring element and the window and a pressure relieving back for increased safety.

### NOMINAL DIAMETER

125mm

### ACCURACY

±0.5% and ±1.0% of Full Scale

### SCALE RANGE (MPa, kPa, bar)

-0.1MPa ~ 0 to 0 ~ 200MPa

### WORKING PRESSURE

Steady : 75% of Full Scale

Over Range Protection : 130% of Full Scale

### WORKING TEMPERATURE

Ambient : -20 ~ 65°C

Fluid : +200°C maximum



## Standard Features

### PRESSURE CONNECTION

Stainless Steel (316SS)

### ELEMENT

Stainless Steel (316SS)

<10MPa : C Type Bourdon Tube

≥10MPa : Helical Type Bourdon Tube

### CASE & COVER

Black Finished Aluminium

### WINDOW

Glass

### MOVEMENT

Stainless Steel

### DIAL

White Aluminium with Black Graduations

### POINTER

PBs2 alloy, Black painted

### CONNECTION

3/8, 1/2 PT, NPT & PF

# ORDERING INFORMATION

## BASE MODEL

**P339 : SAFETY PATTERN PRESSURE GAUGE, ALUMINIUM CASE**

### NOMINAL DIAMETER

5 : 125mm

### MOUNTING TYPE (Refer to Mounting type & Dimension)

B : Bottom Connection, Surface, Case Mounting Plate

### ACCURACY

3 : ±1.0% of Full Scale.

2 : ±0.5% of Full Scale.

### CONNECTION

D : 3/8"

E : 1/2"

### CONNECTION TYPE

B : PF

C : PT

D : NPT

### UNIT

I : MPa

J : kPa

H : bar

### RANGE

Refer to Pressure Unit & Range Table

### DIAL COLOR

3 : 2 Colors

7 : 3 Colors, Available with Compound and Vacuum gauges

### OPTIONS

0 : None

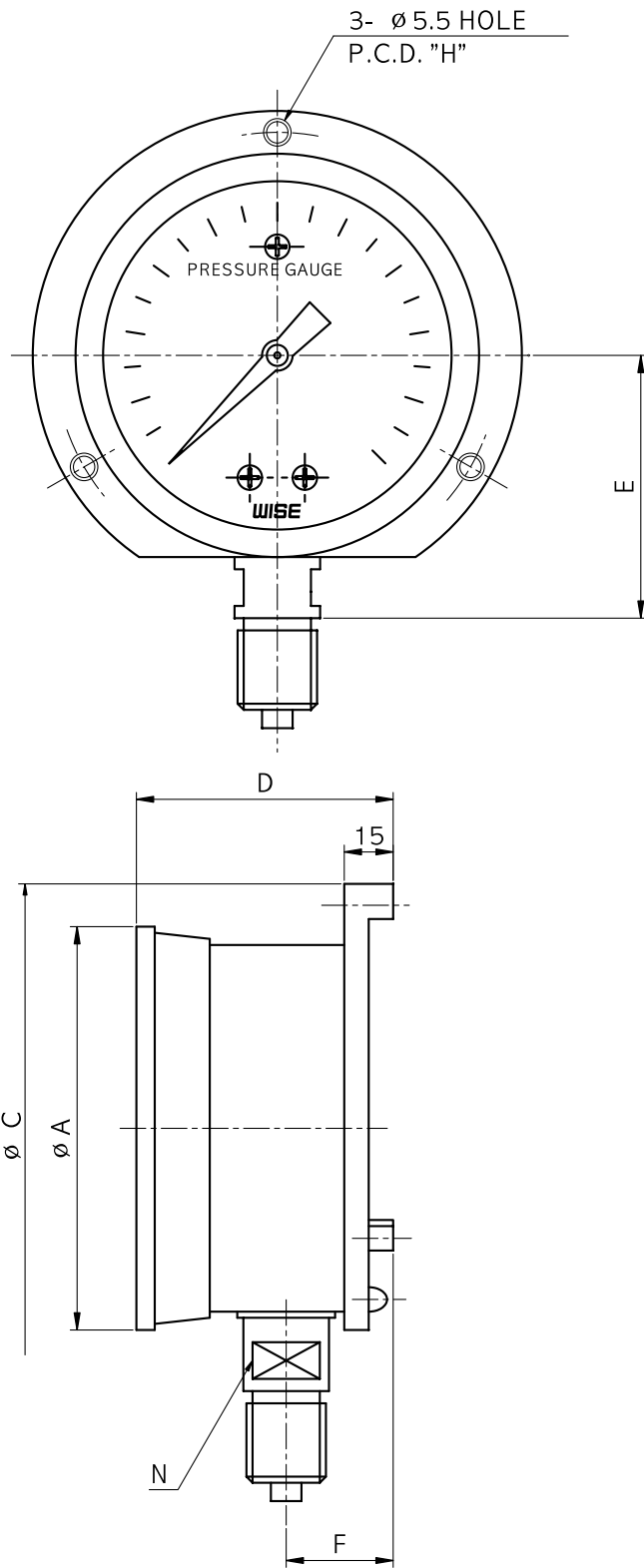
1 : Accessories



**SAMPLE MODEL NUMBER**

**P339 : TYPE OF MOUNTING**

CODE B



Dimensions (mm)

DIAL SIZE	AVAILABLE CODE	A	C	D	E	F	H	N
125	B	128	152	73	94	32.5	138	17

## PRESSURE RANGE TABLE

RANGE & CODE	UNIT & CODE			ACCURACY	
	H : bar	I : MPa	J : kPa	±0.5%	±1.0%
026	-1	-0,1	-100	○	○
040	0,5	0,05	50	○	○
041	1	0,1	100	○	○
133	1,6	0,16	160	○	○
042	2	0,2	200	○	○
134	2,5	0,25	250	○	○
043	3	0,3	300	○	○
044	4	0,4	400	○	○
045	6	0,6	600	○	○
047	10	1	1000	○	○
050	15	1,5	-	○	○
143	16	1,6	-	○	○
051	20	2	-	○	○
052	25	2,5	-	○	○
054	35	3,5	-	○	○
151	40	4	-	○	○
055	50	5	-	○	○
056	60	6	-	○	○
057	70	7	-	○	○
058	100	10	-	○	○
059	150	15	-	○	○
060	160	16	-	○	○
062	250	25	-	○	○
064	350	35	-	○	○
065	400	40	-	○	○
066	500	50	-	○	○
067	600	60	-	○	○
068	700	70	-	○	○
070	1000	100	-	○	○
074	1600	160	-	○	○
075	2000	200	-	○	○
027	+1	+0,1	+100	○	○
127	-1~1,6	-0,1~0,16	-100~160	○	○
028	-1~2	-0,1~0,2	-100~200	○	○
129	-1~2,5	-0,1~0,25	-100~250	○	○
029	-1~3	-0,1~0,3	-100~300	○	○
030	-1~4	-0,1~0,4	-100~400	○	○
010	-1~5	-0,1~0,5	-100~500	○	○
031	-1~6	-0,1~0,6	-100~600	○	○
014	-1~9	-0,1~0,9	-100~900	○	○
032	-1~10	-0,1~1	-100~1000	○	○
033	-1~15	-0,1~1,5	-100~1,5MPa	○	○
034	-1~20	-0,1~2	-100~2MPa	○	○
035	-1~25	-0,1~2,5	-100~2,5MPa	○	○

○ : AVAILABLE × : NOT AVAILABLE